

Installation Instructions - ResinDek® over Concrete

1. Sweep and clean existing floor of all debris.
2. Repair or replace voids with new material or filling compound. Consult ResinDek for details.
3. If installing on ground floor a 6 mil. minimum vapor barrier is required. A heavier vapor barrier may be needed in high moisture locations.
4. For flatness requirements on robotic floors, please refer to robotic manufacturers specification. If none are provided, please default to +/- 1/8" (3 mm) over 36" (914 mm).
5. Use a laser, transit, chalk line, or string to set a true line less than 48" (1219 mm) from one edge of the outside wall to align the long edge of the panel. This will allow you to trim panels for proper spacing around the perimeter.
6. Brick stagger the ResinDek panels is a preferred layout, as shown in **(Figure E)**.
7. Make sure panels are installed with the correct surface on top. Located on the edge of each ResinDek panel is a stamped part number. When correctly installed, the stamp will be right side up.
8. ResinDek panels are a wood based product and may expand over time. Therefore, you must leave a 1/8" (3 mm) minimum gap between ResinDek panels. The gap on the outer edge (perimeter) must not be less than a 1/4" (6 mm) or exceed a maximum of a 1/2" (12 mm)
9. Attached to each ResinDek bundle is a package that includes installation instructions and three 1/8" (3 mm) thick metal panel spacers. Between all adjacent panels insert the metal spacers, two along the long edge and one along a short edge, to ensure proper gapping between the panels. **FAILURE TO USE METAL SPACERS MAY ALLOW FLOOR TO BUCKLE AND WILL VOID ALL WARRANTIES.**
10. It is essential to trim the last row of panels to allow for 1/4" (6 mm) to a 1/2" (12 mm) gap along the outer edges of the ResinDek floor perimeter. You can trim ResinDek panels to size with a circular saw. Carbide tip blades are recommended for best results.

ResinDek® to Concrete Fastening:

1. 20 fasteners per 4'x8' sheet is recommended per **(Figure D)**.
2. Use a 1/2" x 82 Degree counterbore with a stop collar to limit depth.
3. Predrill using a 3/16" masonry drill bit and hammer drill at each screw location. Be sure to clean all debris from predrilled hole.
4. Screws are a 1/4" masonry screw with T-25 torx head.
5. Use an impact driver with T-25 bit to install the screws.
6. Be sure not to over tighten.
7. Screws should be just below the ResinDek surface. See **(Figure F)**.
8. Standard ResinDek screws will NOT work.

Figure C.

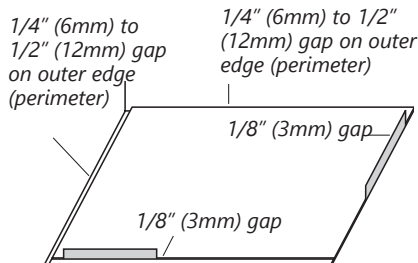


Figure D.

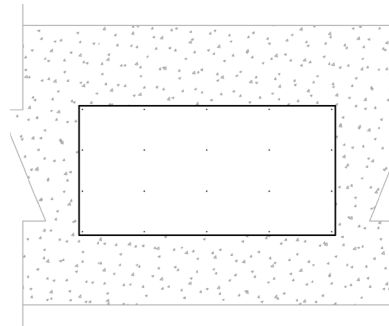


Figure E.

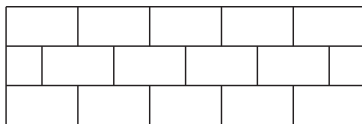


Figure F.

